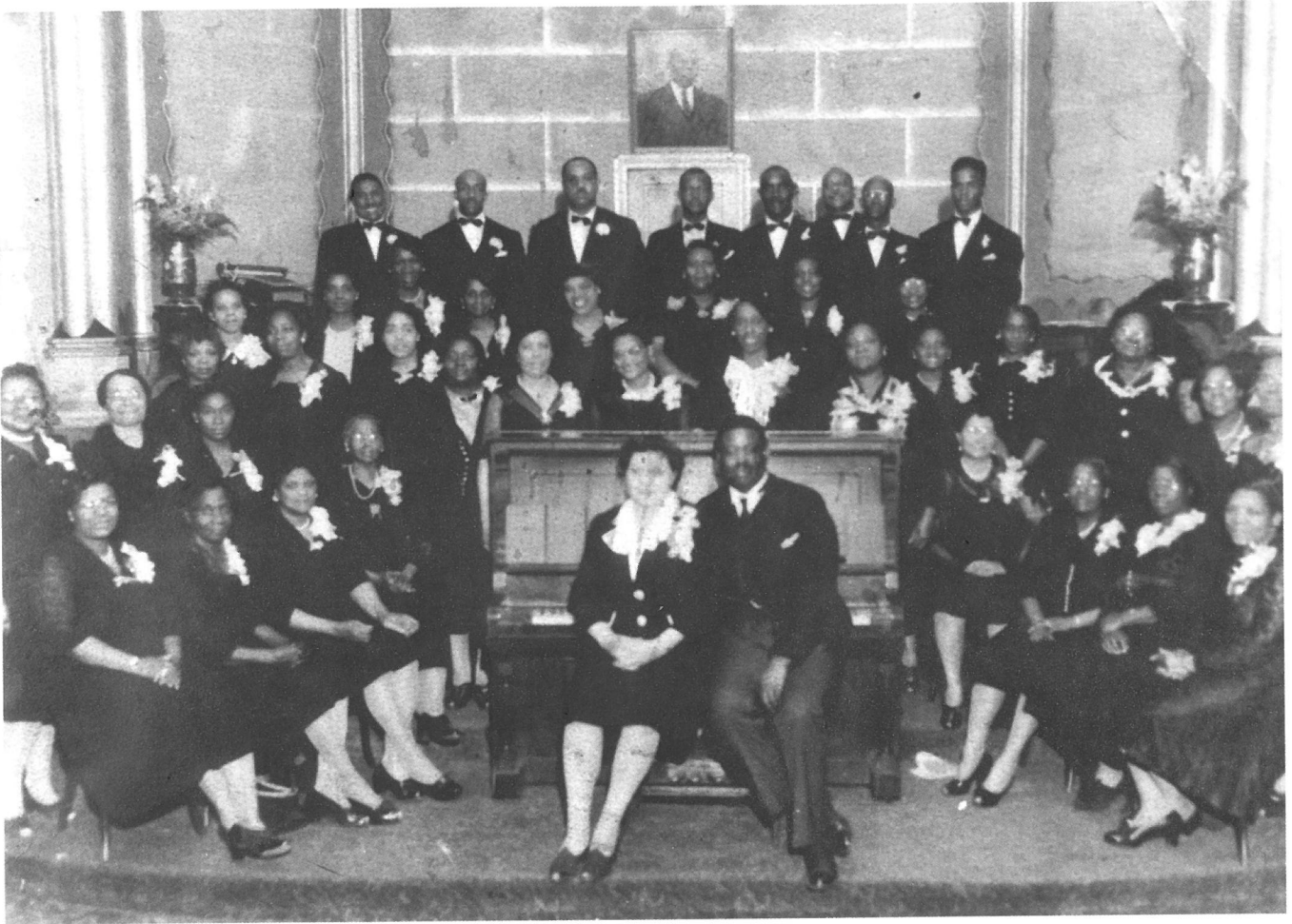


Dr. James Timothy Boddie's Era



Dr. Boddie, the son of a minister and a native of Darby, Pennsylvania, began his ministry in 1920. He assumed the pastorate of New Shiloh in October, 1942 and by 1945 liquidated the debt of \$13,000 owed on the mortgage. He then oversaw a complete renovation of the church including moving the organ and choir loft from the back to the front of the sanctuary, the installation of a public address system and motion picture facilities as well as air conditioning. A south wing was also added which included the church office, choir room and rest rooms.

His wife, Mrs. Emery Moore Boddie, the daughter of a minister of Atlanta, Georgia, was a talented musician. She served as organist and directress of the Senior Choir #2, Allen's Gospel Chorus, the Young People's Choir and the Junior and Intermediate Choirs.

During Dr. Boddie's tenure new groups were organized to encourage spiritual development and participation in church, including Junior, Intermediate and Young People's Choirs for the youth, as well as the Junior Usher Board, the Junior Missionaries and the Boy Scouts. He also encouraged attendance by both youth and adults to National and local Baptist conferences designed to help them grow in the principles of Christ.

Dr. Boddie was well known in religious and civic circles and served numerous organizations, including the Presidency of the United Baptist Missionary Convention. There were large increases to the membership of the church during his pastorate from October 25, 1942 to November 22, 1963. His fruitful pastorate ended with his death on November 22, 1963.